

TESI BANCA VERTICAL este o variantă particulară a caloriferelor tubulare Tesi. Are de la 4 la 6 coloane și următorul număr de elemente: 22, 28, 32, 36, 38, 45, 52. Lățimea variază de la 1014 mm la 2364 mm, înălțimea este de 300 mm. Perfect în spații private sau publice (sală de sport, grădinițe, școli ...) Scaunul nu este inclus. Desenul tehnic se referă la Tesi Banca Vertical cu 22 elemente.



Tesi Panca Verticale, 28 elemente, înălțimea 300 mm, lățime 496 mm, Negru Satinat

Caracteristici Tehnice

- țeavă de oțel cu diametrul de 25 mm
- colectoare din tablă imprimată de oțel
- distanța între elemente de 45 mm
- filetarea extremității colectorului superior și inferior 1" 1/4 G dx și sx
- dopuri 1/2" montate, incluse în dotarea standard
- presiunea maximă de lucru admisă 8 bar
- temperatura maximă de lucru admisă 95°C
- conexiuni hidraulice incluse în dotarea standard Cod. 02

Certifications



Plus



Date tehniche

Model	Deph (mm)	Height (mm)	Width (mm)	Conn. C. (mm)	Weigth (kg)	Capacity (lt)	$\Delta t=60^{\circ}\text{C}$ (Watt)	$\Delta t=50^{\circ}\text{C}$ (Watt)	$\Delta t=40^{\circ}\text{C}$ (Watt)	$\Delta t=30^{\circ}\text{C}$ (Watt)	$\Delta t=20^{\circ}\text{C}$ (Watt)	Exponent
RT4												
4C 0300 el. 22	142,0	302	1014	235	18,20	17,20	1.163,8	926,2	699,6	486,2	292,6	1,258
4C 0300 el. 28	142,0	302	1284	235	23,20	21,80	1.481,2	1.178,8	890,4	618,8	372,4	1,258
4C 0300 el. 32	142,0	302	1464	235	26,50	25,00	1.692,8	1.347,2	1.017,6	707,2	425,6	1,258
4C 0300 el. 36	142,0	302	1644	235	29,80	28,10	1.904,4	1.515,6	1.144,8	795,6	478,8	1,258
4C 0300 el. 38	142,0	302	1734	235	31,50	29,60	2.010,2	1.599,8	1.208,4	839,8	505,4	1,258
4C 0300 el. 45	142,0	302	2049	235	37,30	35,10	2.380,5	1.894,5	1.431,0	994,5	598,5	1,258
4C 0300 el. 52	142,0	302	2364	235	43,10	40,60	2.750,8	2.189,2	1.653,6	1.149,2	691,6	1,258
RT5												
5C 0300 el. 22	180,0	302	1014	235	24,90	20,90	1.427,8	1.130,8	851,4	589,6	352,0	1,276
5C 0300 el. 28	180,0	302	1284	235	31,70	26,60	1.817,2	1.439,2	1.083,6	750,4	448,0	1,276
5C 0300 el. 32	180,0	302	1464	235	36,20	30,40	2.076,8	1.644,8	1.238,4	857,6	512,0	1,276
5C 0300 el. 36	180,0	302	1644	235	40,80	34,20	2.336,4	1.850,4	1.393,2	964,8	576,0	1,276
5C 0300 el. 38	180,0	302	1734	235	43,00	36,10	2.466,2	1.953,2	1.470,6	1.018,4	608,0	1,276
5C 0300 el. 45	180,0	302	2049	235	50,90	42,80	2.920,5	2.313,0	1.741,5	1.206,0	720,0	1,276
5C 0300 el. 52	180,0	302	2364	235	58,90	49,40	3.374,8	2.672,8	2.012,4	1.393,6	832,0	1,276
RT6												

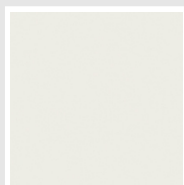
6C 0300 el. 22	218,0	302	1014	235	29,80	24,90	1.689,6	1.335,4	1.001,0	690,8	409,2	1,293
6C 0300 el. 28	218,0	302	1284	235	37,90	31,60	2.150,4	1.699,6	1.274,0	879,2	520,8	1,293
6C 0300 el. 32	218,0	302	1464	235	43,30	36,20	2.457,6	1.942,4	1.456,0	1.004,8	595,2	1,293
6C 0300 el. 36	218,0	302	1644	235	48,70	40,70	2.764,8	2.185,2	1.638,0	1.130,4	669,6	1,293
6C 0300 el. 38	218,0	302	1734	235	51,50	42,90	2.918,4	2.306,6	1.729,0	1.193,2	706,8	1,293
6C 0300 el. 45	218,0	302	2049	235	60,90	50,80	3.456,0	2.731,5	2.047,5	1.413,0	837,0	1,293
6C 0300 el. 52	218,0	302	2364	235	70,40	58,80	3.993,6	3.156,4	2.366,0	1.632,8	967,2	1,293

Pentru $\Delta t \neq$ de 60°C utilizați formula: $Q=Q_n (\Delta t / 60)n$

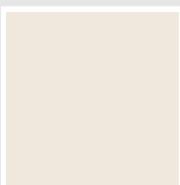
Grație prestațiilor ridicate ale corpurilor încălzitoare Irsap Tesi, se consideră ideale pentru proiectarea la joasă temperatură un Δt la 30°C

Colori e finisaje

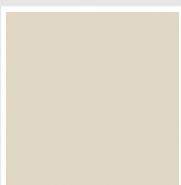
CLASSIC



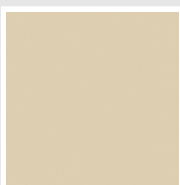
Bianco Edelweiss
Opaco
Cod. 34



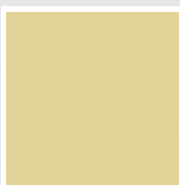
Bianco Whisper
Peach
Cod. 36



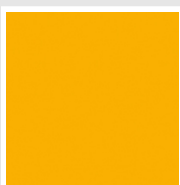
Jasmin Opaco
Cod. 35



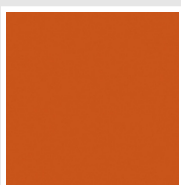
Beige Naturale
Cod. 38



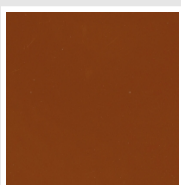
Beige Cream
Cod. 26



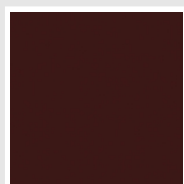
Giallo Melone - RAL
1028
Cod. E7



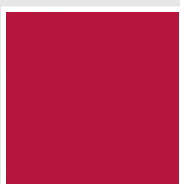
Arancio - RAL 2004
Cod. 17



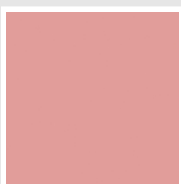
Marrone Ruggine -
RAL 8004
Cod. E1



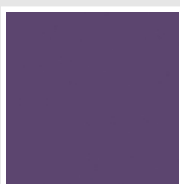
Vinaccia - RAL 3005
Cod. H9



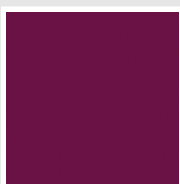
Rosso Fragola - RAL
3018
Cod. Y3



Rosa - RAL 3015
Cod. R2



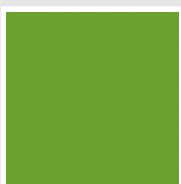
Lilla Bluastro - RAL
4005
Cod. R3



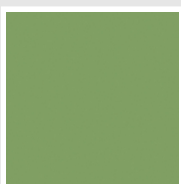
Porpora Traffico -
RAL 4006
Cod. R6



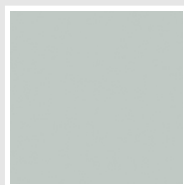
Verde Bosco - RAL
6005
Cod. 19



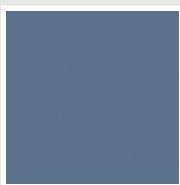
Verde Erba - RAL
6018
Cod. N3



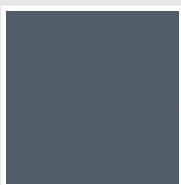
Verde Salvia - RAL
6021
Cod. E6



Verde Greenwich
Cod. 28



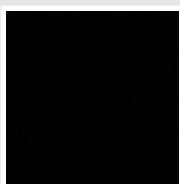
Blu Pastello - RAL
5024
Cod. G7



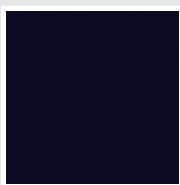
Blu Colomba - RAL
5014
Cod. G9



Blu Hewi
Cod. 11

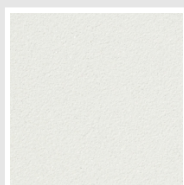


Nero - RAL 9005
Cod. 10

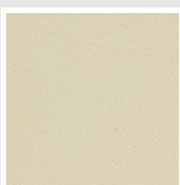


Deep Blue
Cod. 2F

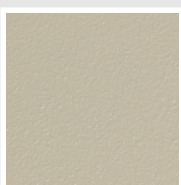
SPECIAL



Bianco Perla
Cod. 16



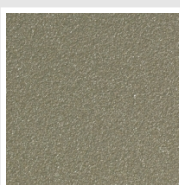
Quartz 1
Cod. 1C



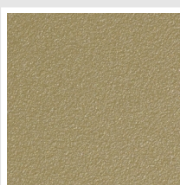
Sablé
Cod. Y4



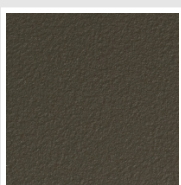
Quartz 2
Cod. 2C



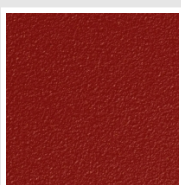
Sunstone
Cod. 2D



Petra
Cod. 3D



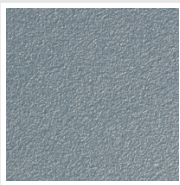
Bruno Tabacco
Cod. 1B



Flame Red
Cod. 7D



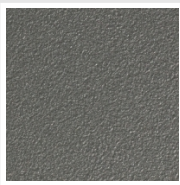
Purple Blue
Cod. 1D



Azurite
Cod. 6D



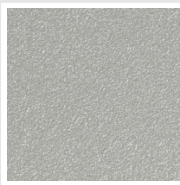
Azurite 3
Cod. 6C



Grigio Medio
Cod. 4D



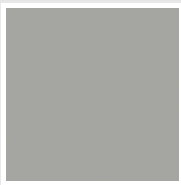
Grigio Titanio
Metallizzato - RAL
9023
Cod. L3



Grigio Silver
Cod. 5D



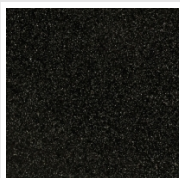
Grigio Perla
Cod. L6



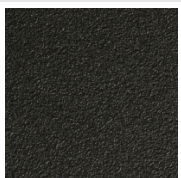
Grigio Alluminio -
RAL 9006
Cod. B4



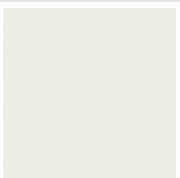
Nero Grafite
Cod. 18



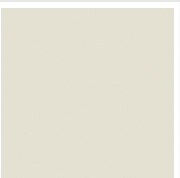
Grigio Quarzo
Cod. 31



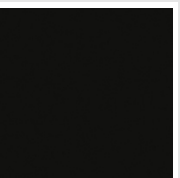
Nero Satinato
Cod. 30



Luxury White
Cod. J7



Bianco Opaco
Cod. J8



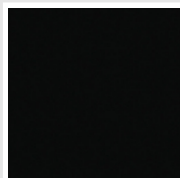
Nero Opaco
Cod. K1



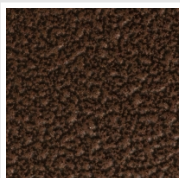
Bronzo
Cod. J9



Grigio Martellato
Cod. 32

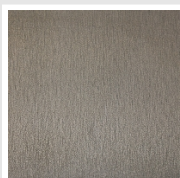


Luxury Black
Cod. J3



Rame Martellato
Cod. J4

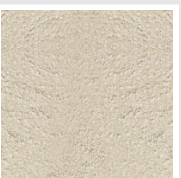
SURFACES



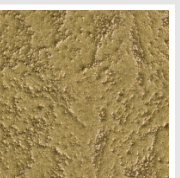
Trattamento Loft
Cod. TR



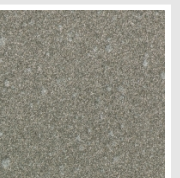
Taftah Argento
Cod. K4



Taftah Platino
Cod. K3



Taftah Oro
Cod. K2



Grey Shadow
Cod. X6

The Colors used in this folder are not considered binding. The different technological painting processes and the materials used for the realization can not have a perfect color match with the delivered product. Irsap company reserves the right to introduce at any time whatever modifications necessary to the improvement of the product.